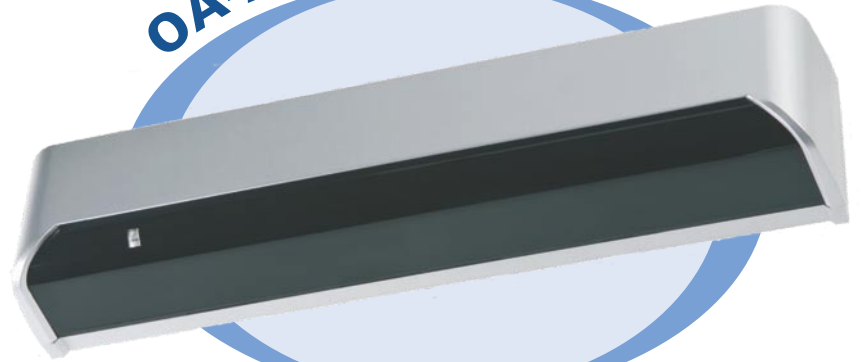




Active Infrared
Door Sensor

OA-Axis series



Reliable
Flexible Easy Installation Safety
Quality Active Infrared
Sensitivity Presence Detection

The Optex OA-Axis series is the new active infrared door sensor standard for use on automatic sliding doors. The OA-Axis series is developed as a combination sensor for threshold safety and activation.

Combination

The Optex OA-Axis series utilizes Optex's unique active infrared technology, combining activation and safety into one sensor. By using the unique Optex presence detection technique the OA-Axis series provides maximum safety around the threshold as well as a large motion detection area for door activation.

Easy adjustment

Installation time can be reduced to a minimum by using easily set switches and adjustments. The sensor can be quickly adjusted for many different applications.

Safety

The active infrared presence detection of the OA-Axis series can be set very accurately and can be moved 6° towards or away from the door. The sensor detects a person or object and holds the door open as long as they are in or near the threshold area, even if they are motionless.

Motion detection

The large detection area provides fast detection for any humans or carts approaching from any angle. The sensor's enhanced pattern depth enables it to detect people and objects farther away and allows the door to open conveniently for them. The presence and motion detection areas can be adjusted independently.

Variety

By offering different types of output contacts the OA-Axis series meets the requirements and local standards in many different markets.

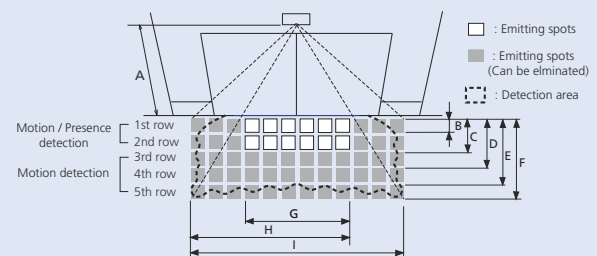
OA-Axis I: relay output for activation and safety.

OA-Axis II: one relay for safety and a second relay for motion/activation.

Active Infrared Door Sensor

Specifications	Model	OA-Axis I/OA-Axis II (See above for descriptions)
Mounting height	Detection angle adjustments	Up to 11' 6" (I/II) 1st - 3rd rows -6° / +6° 4th and 5th rows +26° / +44°
Detection method	Power supply	Active infrared reflection 12-24V AC±10% (50/60Hz) 12-30V DC±10%
Power consumption	Power consumption	OA-Axis I: <3VA OA-Axis II: <4VA
LED Operating indicator voltage	Output (OA-Axis I)	See installation manuals 5 to 50VDC, Current / 100 mA max. 600 nA max.
Dark current	Output (OA-Axis II)	Form C relay, 50V, 0.3A max. 1st-3rd row Form C relay 50V 0.3A max. (resistance load) 3rd-5th row Form C relay 50V 0.3A max. (resistance load)
Output hold time	Response time	Approx. 0.5s <0.3s
Operating temperature	Weight	-4°F - +131°F 320g
Accessories	Available colors	3' connection cable 2 mounting screws 1 mounting template 1 area adjustment tool Black and silver

Detection Area Chart



Mounting Height A	7' 2"	8' 2"	8' 10"	9' 10"
Area Depth B	5 1/2"	6"	7"	8"
Area Depth C	1' 5"	1' 7"	1' 8"	1' 11"
Area Depth D	2' 8"	3' 1"	3' 3"	3' 7"
Area Depth E	4' 5"	5' 1"	5' 5"	6' 1"
Area Depth F	6' 3"	7' 1"	7' 8"	8' 6"
Area Width G	4' 4"	4' 11"	5' 4"	5' 11"
Area Width H	6' 9"	7' 7"	8' 3"	9' 2"
Area Width I	9' 2"	10' 4"	11' 2"	12' 5"

The actual detection may differ according to the size/material/entry speed of the object and the installation environment.



3882 Del Amo Blvd, Suite 604
Torrance CA 90503
Ph 310 214-8644
Fax 310 214-8655
Toll free 800 877-6656
www.ot-inc.com

